

AUSTRALIAN PRODUCT INFORMATION - NOUMED TELMISARTAN (telmisartan 40 mg & 80 mg tablets)

1. NAME OF THE MEDICINE

Telmisartan

2. QUALITATIVE AND QUANTITATIVE COMPOSITION

Each NOUMED TELMISARTAN tablet contains either 40 mg or 80 mg of the active ingredient telmisartan.

Excipients with known effect: sugars (as lactose). For the full list of excipients, see **section 6.1 List of excipients**.

3. PHARMACEUTICAL FORM

NOUMED TELMISARTAN 40mg tablets are white, oblong, plain tablets, scored on one side and debossed with 40 on the other side.

NOUMED TELMISARTAN 80mg tablets are white, oblong, plain tablets, scored on one side and debossed with 80 on the other side.

4. CLINICAL PARTICULARS

4.1 THERAPEUTIC INDICATIONS

NOUMED TELMISARTAN is indicated for

- Treatment of hypertension
- Prevention of cardiovascular morbidity and mortality in patients 55 years or older with coronary artery disease, peripheral artery disease, previous stroke, transient ischaemic attack or high risk diabetes with evidence of end organ damage (see **section 5.1 Pharmacodynamic properties: Clinical trials**).

4.2 DOSE AND METHOD OF ADMINISTRATION

Dosage

Treatment of hypertension

Adults: The recommended dose is 40 mg once daily. In cases where the target blood pressure is not achieved, telmisartan dose can be increased to 80 mg once daily. Telmisartan may be used in combination with thiazide-type diuretics such as hydrochlorothiazide which has been shown to have an additive blood pressure lowering effect with telmisartan. When considering raising the dose, it must be borne in mind that, while reduction in blood pressure is achieved after the first dose, the maximum antihypertensive effect is generally attained four to eight weeks after the start of treatment.

Prevention of cardiovascular morbidity and mortality

The recommended dose is 80 mg once daily. It is not known whether doses lower than 80 mg of telmisartan are effective in preventing cardiovascular morbidity and mortality.

When initiating telmisartan therapy for the prevention of cardiovascular morbidity and mortality, monitoring of blood pressure is recommended, and if appropriate, adjustment of medications that lower blood pressure may be necessary.

Method of administration

Telmisartan may be administered with or without food.

Dosage adjustments***Use in the elderly***

No dosing adjustment is necessary.

Use in patients with renal impairment

No dose adjustment is required for patients with renal impairment, including those on haemodialysis. Telmisartan is not removed from blood by haemofiltration.

Use in patients with hepatic impairment

In patients with mild to moderate hepatic impairment, the dosage should not exceed 40 mg once daily (see **section 4.4 Special warnings and precautions for use**).

4.3 CONTRAINDICATIONS

- Hypersensitivity to any of the components of the product
- Pregnancy
- Lactation
- Biliary obstructive disorders
- Severe hepatic impairment
- Concomitant use of angiotensin receptor blockers (ARBs) including telmisartan, or of angiotensin-converting-enzyme inhibitors (ACE inhibitors) with aliskiren in patients with diabetes mellitus or renal impairment (GFR < 60 mL/min/1.73 m²).

In case of rare hereditary conditions that may be incompatible with an excipient of the product, the use of the product is contraindicated (see **section 4.4 Special warnings and precautions for use**).

4.4 SPECIAL WARNINGS AND PRECAUTIONS FOR USE***Renal artery stenosis and kidney transplant***

There are no data available on the use of telmisartan in patients who have had a kidney transplant.

There is an increased risk of severe hypotension and renal insufficiency when patients with bilateral renal artery stenosis or stenosis of the artery to a single functioning kidney are treated with medicinal products that affect the renin-angiotensin-aldosterone system.

Increases in serum creatinine have been observed in studies with ACE inhibitors in patients with single or bilateral renal artery stenosis. An effect similar to that observed with ACE inhibitors should be anticipated with telmisartan.

Dual blockade of the renin-angiotensin-aldosterone system

As a consequence of inhibiting the renin-angiotensin-aldosterone system, changes in renal function (including acute renal failure) have been reported in susceptible individuals, especially if combining medicinal products that affect this system. Dual blockade of the renin-angiotensin-aldosterone system (e.g. by adding an ACE-inhibitor or the direct renin-inhibitor aliskiren to an angiotensin II receptor antagonist) should therefore be limited to individually defined cases with close monitoring of renal function (see **section 4.3 Contraindications**).

In the ONTARGET trial, patients receiving the combination of telmisartan and ramipril did not obtain any additional benefit compared to monotherapy, but experienced an increased incidence of hyperkalaemia, renal failure, hypotension and syncope compared with groups receiving telmisartan alone or ramipril alone (see also **section 5.1 Pharmacodynamic properties: Clinical trials**). Concomitant use of telmisartan and ramipril is therefore not recommended in patients with already controlled blood pressure.

Combination use of ACE inhibitors or angiotensin receptor antagonists, anti-inflammatory drugs and thiazide diuretics

The use of an ACE-inhibitor or angiotensin receptor antagonist, an anti-inflammatory drug (NSAID or COX-2 inhibitor) and a thiazide diuretic at the same time increases the risk of renal impairment. This includes use in fixed-combination products containing more than one class of drug. Combined use of these medications should be accompanied by increased monitoring of serum creatinine, particularly at the institution of the combination. The combination of drugs from these three classes should be used with caution particularly in elderly patients or those with pre-existing renal impairment.

Primary aldosteronism

Patients with primary aldosteronism generally will not respond to antihypertensive medicinal products acting through inhibition of the renin-angiotensin system. Therefore, the use of telmisartan is not recommended.

Diabetes mellitus

Exploratory post-hoc analyses of two placebo-controlled telmisartan trials suggested an increased risk of fatal myocardial infarction and unexpected cardiovascular death (death occurring within 24 hours of the onset of symptoms without confirmation of cardiovascular cause, and without clinical or post mortem evidence of other aetiology) in patients with diabetes mellitus who have no documented medical history of either coronary heart disease or myocardial infarction. In patients with diabetes mellitus, coronary heart disease may be asymptomatic and can therefore remain undiagnosed. Treatment with the blood pressure lowering agent telmisartan may further reduce coronary perfusion in these patients. For this reason, patients with diabetes mellitus should undergo specific diagnosis and be treated accordingly before initiating therapy with telmisartan.

Diabetic patients treated with insulin or anti-diabetics, hypoglycaemia may occur under telmisartan treatment. Therefore, in these patients an appropriate blood glucose monitoring should be considered; a dose adjustment of insulin or antidiabetics may be required, when indicated.

Aortic and mitral valve stenosis, and obstructive hypertrophic cardiomyopathy

As with other vasodilators, special caution is indicated in patients suffering from aortic or mitral valve stenosis, or obstructive hypertrophic cardiomyopathy.

Hyperkalaemia

During treatment with medicinal products that affect the renin-angiotensin-aldosterone system, hyperkalaemia may occur, especially in the presence of renal impairment and/or heart failure. Monitoring of serum potassium levels in patients at risk is recommended.

Based on experience with the use of medicinal products that affect the renin-angiotensin system, concomitant use with potassium-sparing diuretics, potassium supplements, salt substitutes containing potassium, or other medicinal products that may increase the potassium level (e.g. heparin, etc.) may lead to an increase in serum potassium and should, therefore, be co-administered cautiously with telmisartan.

Lactose

This product contains lactose. Patients with rare hereditary problems of galactose intolerance, the Lapp lactase deficiency or glucose-galactose malabsorption should not take this medicine.

Sodium- and/or volume-depleted patients

Symptomatic hypotension, especially after the first dose, may occur in patients who are volume and/or sodium depleted by vigorous diuretic therapy, dietary salt restriction, diarrhoea or vomiting. Such conditions, especially volume and/or sodium depletion, should be corrected before the administration of telmisartan.

Use in cardiac failure

Telmisartan may be used in patients with congestive heart failure. However patients should be carefully observed for hypotension when initiating therapy.

Other

As observed for angiotensin converting enzyme inhibitors, angiotensin receptor antagonists including telmisartan are apparently less effective in lowering blood pressure in black people than in non-blacks, possibly because of higher prevalence of low-renin states in the black hypertensive population.

As with any antihypertensive agent, excessive reduction of blood pressure in patients with ischaemic cardiopathy or ischaemic cardiovascular disease could result in a myocardial infarction or stroke.

Use in hepatic impairment

The majority of telmisartan is eliminated in the bile. Patients with biliary obstructive disorders or severe hepatic insufficiency can be expected to have reduced clearance. Telmisartan is, therefore, contraindicated for use in these patients.

Telmisartan should only be used with caution in patients with mild to moderate hepatic impairment (see **section 4.2 Dose and method of administration**).

Use in renal impairment

When telmisartan is used in patients with impaired renal function, periodic monitoring of potassium and creatinine serum levels is recommended.

As a consequence of inhibiting the renin-angiotensin-aldosterone system, changes in renal function may be anticipated in susceptible individuals. In patients whose vascular tone and renal function depend predominantly on the activity of the renin-angiotensin-aldosterone system (e.g. patients with severe congestive heart failure or underlying renal disease, including renal artery stenosis), treatment with angiotensin converting enzyme inhibitors and angiotensin II receptor antagonists has been associated with acute hypotension, oliguria and/or progressive uraemia and rarely with acute renal failure and/or death.

Use in the elderly

See **sections 4.2 Dose and method of administration** and **5.2 Pharmacokinetic properties: Special populations**.

Paediatric use

The safety and efficacy of telmisartan for use in children below 18 years have not been established.

Effects on laboratory tests

No significant differences in changes in laboratory test parameters were observed in clinical studies with telmisartan. See **section 4.8 Adverse effects (Undesirable effects)**.

4.5 INTERACTIONS WITH OTHER MEDICINES AND OTHER FORMS OF INTERACTIONS

Other interactions of clinical significance have not been identified. Co-administration of telmisartan did not result in a clinically significant interaction with digoxin, warfarin, hydrochlorothiazide, glibenclamide, ibuprofen, paracetamol, simvastatin and amlodipine.

When telmisartan was co-administered with digoxin, an increase in digoxin AUC (22%), C_{max} (50%), and C_{min} (13%) values was observed. It is recommended that digoxin levels be monitored when initiating, adjusting, and discontinuing telmisartan to avoid possible over- or under- digitalisation.

In one study, the co-administration of telmisartan 80 mg once daily and ramipril 10 mg once daily to healthy subjects increases steady-state C_{max} and AUC of ramipril 2.3- and 2.1 fold, respectively, and C_{max} and AUC of ramiprilat 2.4- and 1.5-fold, respectively. In contrast, C_{max} and AUC of telmisartan decrease by 31% and 16% respectively. The clinical relevance of this observation is not fully known. When co-administering telmisartan and ramipril, the response may be greater because of the possibly additive pharmacodynamic effects of the combined drugs and also because of the increased exposure to ramipril and ramiprilat in the presence of telmisartan. Combining telmisartan with ramipril in the ONTARGET trial resulted in a significantly higher incidence of hyperkalaemia, renal failure, hypotension and syncope compared to telmisartan alone or ramipril alone (see also **section 5.1 Pharmacodynamic properties: Clinical trials**). Concomitant use of telmisartan and ramipril is therefore not recommended in patients with already controlled blood pressure and should be limited to individually defined cases with close monitoring of renal function (see also **section 4.4 Special warnings and precautions for use**).

As with other medicinal products acting on the renin-angiotensin-aldosterone system, telmisartan may provoke hyperkalaemia (see **section 4.4 Special warnings and precautions for use**). The risk may increase in case of treatment combination with other medicinal products that may also provoke hyperkalaemia (salt substitutes containing potassium, potassium-sparing diuretics, ACE inhibitors, angiotensin II receptor antagonists, non-steroidal anti-inflammatory medicinal products (NSAIDs, including selective COX-2 inhibitors), heparin, immunosuppressives (cyclosporin or tacrolimus), and trimethoprim.

The occurrence of hyperkalaemia depends on associated risk factors. The risk is increased in case of the abovementioned treatment combinations. The risk is particularly high in combination with potassium sparing-diuretics, and when combined with salt substitutes containing potassium. A combination with ACE inhibitors or NSAIDs, for example, presents a lesser risk provided that precautions for use are strictly followed.

Concomitant use not recommended

Potassium sparing diuretics or potassium supplements

Angiotensin II receptor antagonists such as telmisartan, attenuate diuretic induced potassium loss. Potassium sparing diuretics e.g. spironolactone, eplerenone, triamterene, or amiloride, potassium supplements, or potassium-containing salt substitutes may lead to a significant increase in serum potassium. If concomitant use is indicated because of documented hypokalaemia they should be used with caution and with frequent monitoring of serum potassium.

Lithium

Reversible increases in serum lithium concentrations and toxicity have been reported during concomitant administration of lithium with angiotensin converting enzyme inhibitors. Cases have also been reported with angiotensin II receptor antagonists including telmisartan. Careful monitoring of serum lithium levels is recommended during concomitant use.

Concomitant use requiring caution

Non-steroidal anti-inflammatory medicinal products

Treatment with NSAIDs (i.e. aspirin at anti-inflammatory dosage regimens, COX-2 inhibitors and non-selective NSAIDs) may reduce the antihypertensive effect of angiotensin II receptor antagonists. In some patients with compromised renal function (e.g. dehydrated patients or elderly patients with compromised renal function), the co-administration of angiotensin II receptor antagonists and agents that inhibit cyclo-oxygenase may result in further deterioration of renal function, including possible renal failure, which is usually reversible. Therefore, the combination should be administered with caution, especially in the elderly. Patients should be adequately hydrated and monitoring of renal function at the beginning of combined treatment and periodically thereafter should be considered.

Diuretics (thiazide or loop diuretics)

Prior treatment with high dose diuretics such as furosemide (frusemide) (loop diuretic) and hydrochlorothiazide (thiazide diuretic) may result in volume depletion and in a risk of hypotension when initiating therapy with telmisartan.

To be taken into account with concomitant use

Other antihypertensive agents

The blood pressure lowering effect of telmisartan can be increased by concomitant use of other antihypertensive medicinal products.

The dual blockade of the renin-angiotensin-aldosterone-system through the combined use of ACE-inhibitors, angiotensin II receptor blockers or aliskiren is associated with a higher frequency of adverse events such as hypotension, hyperkalaemia and decreased renal function (including acute renal failure) compared to the use of a single agent (see **sections 4.3 Contraindications, 4.4 Special warnings and precautions for use and 5.1 Pharmacodynamic properties**).

Corticosteroids (systemic route)

Reduction of the antihypertensive effect.

Other medications

Based on their pharmacological properties it can be expected that the following medicinal products may potentiate the hypotensive effects of all antihypertensives including telmisartan: baclofen, amifostine. Furthermore, orthostatic hypotension may be aggravated by alcohol, barbiturates, narcotics or antidepressants.

Telmisartan is not metabolised by the cytochrome P450 system and had no effects *in vitro* on cytochrome P450 enzymes, except for some inhibition of CYP2C19. Telmisartan is not expected to interact with drugs that inhibit, or are metabolised by, cytochrome P450 enzymes.

4.6 FERTILITY, PREGNANCY AND LACTATION

Effects on fertility

No studies on fertility in humans have been performed. Fertility of male and female rats was unaffected at oral telmisartan doses up to 100 mg/kg/day.

Use in pregnancy

Category D

Angiotensin II receptor antagonists should not be initiated during pregnancy. The use of angiotensin II receptor antagonists is not recommended during the first trimester of pregnancy. When pregnancy is diagnosed, treatment with angiotensin II receptor antagonists should be stopped immediately, and, if appropriate, alternative therapy should be started. The use of angiotensin II receptor antagonists is contraindicated during the second and third trimester of pregnancy.

Although there is no clinical experience with telmisartan in pregnant women, *in utero* exposure to drugs that act directly on the renin-angiotensin system can cause foetal and neonatal morbidity and even death. Several dozen cases have been reported in the world literature in patients who were taking angiotensin converting enzyme inhibitors. Therefore, when pregnancy is detected, telmisartan should be discontinued as soon as possible.

Preclinical studies with telmisartan do not indicate teratogenic effect, but have shown fetotoxicity.

Angiotensin II receptor antagonists exposure during the second and third trimesters is known to induce human fetotoxicity (decreased renal function, oligohydramnios, skull ossification retardation) and neonatal toxicity (renal failure, hypotension, hyperkalaemia). Oligohydramnios reported in this setting, presumably resulting from decreased foetal renal function, has been associated with foetal limb contractures, craniofacial deformation, and hypoplastic lung development. Prematurity, intrauterine growth retardation, and patent ductus arteriosus have also been reported, although it is not clear whether these occurrences were due to exposure to the drug.

These adverse effects do not appear to occur when drug exposure has been limited to the first trimester. Mothers whose embryos and foetuses are exposed to an angiotensin II receptor antagonist only during the first trimester should be so informed. Women of child-bearing age should be warned of the potential hazards to their foetus should they become pregnant.

Unless continued angiotensin II receptor antagonist therapy is considered essential, patients planning pregnancy should be changed to alternative anti-hypertensive treatments which have an established safety profile for use in pregnancy. When pregnancy is diagnosed, treatment with angiotensin II receptor antagonists should be stopped immediately, and, if appropriate, alternative therapy should be started.

Should exposure to angiotensin II receptor antagonists have occurred from the second trimester of pregnancy, ultrasound check of renal function and skull is recommended. Infants whose mothers have taken angiotensin II receptor antagonists should be closely observed for hypotension, oliguria and hyperkalaemia.

Telmisartan has been shown to cross the placenta in rats. There were no teratogenic effects when telmisartan was administered orally to rats and rabbits during the period of organogenesis at doses up to 50 and 45 mg/kg/day, respectively. However, foetal resorptions were observed at the highest dose level in rabbits. Administration of 50 mg/kg/day telmisartan to rats during pregnancy and lactation caused a decrease in birth weight and suppression of postnatal growth and development of the offspring.

The no-effect dose level in rabbits was 15 mg/kg/day, and corresponded to a plasma AUC value that was about 9 times higher than that anticipated in women at the highest recommended dose. Plasma drug

levels were not measured at the high dose level in rats, but data from other studies suggest that they would have been similar to those in women at the maximum recommended dose.

Use in lactation

Telmisartan is contraindicated during lactation since it is not known whether it is excreted in human milk. Animal studies have shown excretion of telmisartan in breast milk. No clinical trials have been carried out in lactating women. Therefore, lactating women should either not be prescribed telmisartan or should discontinue breastfeeding, if telmisartan is administered.

Telmisartan is excreted in the milk of lactating rats. When administered orally to lactating rats at 50 mg/kg/day, telmisartan suppressed postnatal growth and development of the offspring.

4.7 EFFECTS ON ABILITY TO DRIVE AND USE MACHINES

There are no data to suggest that telmisartan affects the ability to drive and use machines. However, when driving or operating machinery it should be taken into account that with antihypertensive therapy, occasionally dizziness or drowsiness may occur.

4.8 ADVERSE EFFECTS (UNDESIRABLE EFFECTS)

Adverse reactions have usually been mild and transient in nature and have only infrequently required discontinuation of therapy. The incidence of adverse reactions was not dose related and showed no correlation with gender, age or race of the patients.

Treatment of hypertension

The overall incidence of adverse reactions reported with telmisartan was comparable to placebo in placebo-controlled trials involving 1041 patients treated with various doses of telmisartan (20 to 160 mg) for up to 12 weeks. Therefore, the following information refers to adverse events irrespective of their causal relationship.

Adverse events with an incidence of 1% or more in telmisartan-treated patients and greater than placebo are shown in **Table 1**. The frequency of these adverse events was not significantly different between the telmisartan-treated and placebo patients.

Table 1: Frequency of adverse events (%) in placebo-controlled trials

Adverse event (System Organ Class / Preferred term)	Telmisartan monotherapy (n = 1041)	Placebo (n = 380)
General		
pain	3.5	4.7
fatigue	3.0	3.7
influenza like illness	2.1	1.8
chest pain	1.3	1.3
Nervous system		
headache	9.7	17.4
dizziness	4.2	6.3
Gastrointestinal		
diarrhoea	2.8	1.6
dyspepsia	1.9	1.6
nausea	1.1	1.6
abdominal pain	1.0	0.8
Respiratory		
coughing	1.4	1.6

Adverse event (System Organ Class / Preferred term)	Telmisartan monotherapy (n = 1041)	Placebo (n = 380)
<i>Musculoskeletal/Connective tissue/bone</i>		
back pain	3.2	1.1
myalgia	1.4	1.1
<i>Infections/infestations</i>		
upper respiratory tract infections	6.9	6.1
sinusitis	2.2	2.4
pharyngitis	1.1	0.0
urinary tract infections (including cystitis)	1.2	1.1

In addition, the following adverse events occurred in more than 1% of the 3455 patients treated in all trials with telmisartan although causal association of these events with telmisartan could not be established:

bronchitis, insomnia, arthralgia, anxiety, depression, palpitation, muscle spasms (cramps in legs) and rash

In addition to those listed above, adverse events that occurred in less than 1% but more than 0.3% of 3500 patients treated with telmisartan monotherapy in controlled or open trials are listed below. It cannot be determined whether these events were causally related to telmisartan tablets:

<i>Infections and infestations:</i>	upper respiratory tract infections (including rhinitis), bronchitis, urinary tract infections (including cystitis), infection, fungal infection, abscess, otitis media
<i>Immune system disorders:</i>	allergy
<i>Metabolism and nutrition disorders:</i>	gout, hypercholesterolaemia, diabetes mellitus
<i>Psychiatric disorders:</i>	anxiety, insomnia, depression, nervousness
<i>Nervous system disorders:</i>	somnolence, migraine, paraesthesia, hypoaesthesia
<i>Eye disorders:</i>	visual disturbance, conjunctivitis
<i>Ear and labyrinth disorders:</i>	vertigo, tinnitus, earache
<i>Cardiac disorders:</i>	tachycardia, palpitation, angina pectoris
<i>Vascular disorders:</i>	flushing, cerebrovascular disorder
<i>Respiratory disorders:</i>	dyspnoea, asthma, epistaxis
<i>Gastrointestinal disorders:</i>	dry mouth, flatulence, stomach discomfort, vomiting, constipation, gastritis, haemorrhoids, gastroenteritis, enteritis, gastroesophageal reflux, toothache
<i>Skin and subcutaneous tissue disorders:</i>	eczema, pruritus, hyperhidrosis, rash, dermatitis
<i>Musculoskeletal, connective tissue and bone disorders:</i>	arthralgia, involuntary muscle contractions or muscle spasms (cramps in legs) or pain in extremity (leg pain), arthritis
<i>Renal and urinary tract disorders:</i>	micturition frequency
<i>Reproductive system and breast disorders:</i>	impotence
<i>General disorders and administration site conditions:</i>	malaise, fever, leg oedema, dependent oedema
<i>Investigations:</i>	abnormal ECG

Laboratory findings

No significant differences in changes in laboratory test parameters were observed in clinical studies with telmisartan.

Haemoglobin decreased: A greater than 2 g/dL decrease in haemoglobin was observed in 0.8% telmisartan patients compared with 0.3% placebo patients. No patients discontinued therapy due to anaemia.

Blood creatinine increased: A 0.5 mg/dL rise or greater in creatinine was observed in 0.4% telmisartan patients compared with 0.3% placebo patients. One telmisartan-treated patient discontinued therapy due to increases in creatinine and blood urea nitrogen.

Hepatic enzymes increased: Occasional elevations of liver chemistries occurred in patients treated with telmisartan; all marked elevations occurred at a higher frequency with placebo. No telmisartan-treated patients discontinued therapy due to abnormal hepatic function.

Prevention of cardiovascular morbidity and mortality

Because common adverse reactions were well characterised in studies of telmisartan in hypertension, only adverse events leading to discontinuation and serious adverse events were recorded in subsequent studies of telmisartan in the prevention of cardiovascular morbidity and mortality.

The safety profile of telmisartan in patients treated for the prevention of cardiovascular morbidity and mortality was consistent with that obtained in hypertensive patients.

In the ONTARGET study (N=25620, 4.5 years mean duration of follow up), discontinuations due to adverse events were 8.7% on telmisartan, 11.0% on ramipril and 12.4% on combination of telmisartan and ramipril.

In the TRANSCEND study (N=5926, 4 years and 8 months of follow up), discontinuations due to adverse events were 8.4% on telmisartan and 7.6% on placebo.

In the PRoFESS study (N=20332, 2.5 years follow up), discontinuations due to adverse events were 14.5% on telmisartan and 11.2% on placebo. Because of the factorial design of the PRoFESS trial, the discontinuation rates observed in the telmisartan and placebo groups could also be due in part to the concomitant administration of either antiplatelet study medication (clopidogrel or aspirin + dipyridamole).

Adverse events in TRANSCEND occurring at least 1% more common in telmisartan-treated patients than in placebo-treated patients are shown in **Table 2**. Additionally for these events the incidences from ONTARGET are also presented. The data is derived from all serious adverse events reported during the study.

Table 2: TRANSCEND adverse events (%) occurring at least 1% or more common in patients treated with telmisartan than in patients treated with placebo, including ONTARGET incidences

Adverse event	TRANSCEND*		ONTARGET*		
	Telmisartan (n=2954)	Placebo (n=2972)	Telmisartan (n=8542)	Ramipril (n=8576)	Telmisartan /Ramipril (n=8502)
Intermittent claudication	7	6	8	8	8
Skin ulcer	3	2	4	4	3

*Based on serious adverse events collected during the trial

Combining telmisartan with ramipril in the ONTARGET study resulted in a higher incidence of hyperkalaemia, renal failure, hypotension and syncope compared to telmisartan or ramipril alone.

In clinical studies with patients at high risk of developing major cardiovascular events, cases of sepsis, including some with fatal outcomes, have been reported. In the PROfESS trial, an increased incidence of sepsis was noted for telmisartan compared with placebo, 0.70 % versus 0.49 %; the incidence of fatal sepsis cases was increased for patients taking telmisartan (0.33 %) versus patients taking placebo (0.16%). The observed increased occurrence rate of sepsis associated with the use of telmisartan may be either a chance finding or related to a mechanism not currently known.

Post-marketing experience

In addition, the following have also been reported since the introduction of telmisartan in the market:

<i>Blood and lymphatic system disorders</i>	
Uncommon:	anaemia
Rare:	eosinophilia, thrombocytopenia
<i>Immune system disorders</i>	
Rare:	anaphylactic reaction, hypersensitivity
<i>Metabolism and nutrition disorders</i>	
Uncommon:	hyperkalaemia
Rare:	hypoglycaemia (in diabetic patients)
<i>Nervous system disorders</i>	
Uncommon:	syncope (faint)
<i>Cardiac disorders</i>	
Uncommon:	bradycardia
<i>Vascular disorders</i>	
Uncommon:	hypotension, orthostatic hypotension
<i>Hepatobiliary disorders</i>	
Rare:	hepatic function abnormal / liver disorder (Most cases reported in Japan, where patients are more likely to experience these adverse reactions)
<i>Skin and subcutaneous tissue disorders</i>	
Rare:	angioedema (with fatal outcome), erythema, urticaria, drug eruption, toxic skin eruption
<i>Musculoskeletal, connective tissue and bone disorders</i>	
Rare:	tendon pain (tendinitis like symptoms)
<i>Renal and urinary tract disorders</i>	
Uncommon:	renal impairment including acute renal failure (see section 4.4 Special warnings and precautions for use)
<i>General disorders and administration site conditions</i>	
Uncommon:	asthenia (weakness)
<i>Investigations</i>	
Rare:	blood uric acid increased, blood creatine phosphokinase (CPK) increased

Reporting suspected adverse effects

Reporting suspected adverse reactions after registration of the medicinal product is important. It allows continued monitoring of the benefit-risk balance of the medicinal product. Healthcare professionals are asked to report any suspected adverse reactions at www.tga.gov.au/reporting-problems.

4.9 OVERDOSE

For information on the management of overdose, contact the Poisons Information Centre on 13 11 26 (Australia).

Limited information is available with regard to overdose in humans. The most prominent manifestations of telmisartan overdose were hypotension and tachycardia; bradycardia also occurred. If symptomatic hypotension should occur, supportive treatment should be instituted. Telmisartan is not removed by haemodialysis.

5. PHARMACOLOGICAL PROPERTIES

5.1 PHARMACODYNAMIC PROPERTIES

Mechanism of action

Telmisartan displaces angiotensin II with very high affinity from its binding site at the AT₁ receptor subtype, which is responsible for the known actions of angiotensin II. Telmisartan does not exhibit any partial agonist activity at the AT₁ receptor. Telmisartan binds selectively with the AT₁ receptor and does not reveal relevant affinity for other receptors nor does it inhibit human plasma renin or block ion channels. The clinically relevant effect of AT₁ receptor blockade is to lower blood pressure by inhibition of angiotensin II mediated vasoconstriction leading to reduction of systemic vascular resistance. During administration with telmisartan, removal of angiotensin II negative feedback on renin secretion results in increased plasma renin activity, which in turn leads to increases in angiotensin II in plasma. Despite these increases, antihypertensive activity and suppressed aldosterone levels indicate effective angiotensin II receptor blockade. Telmisartan does not inhibit angiotensin converting enzyme (kininase II), the enzyme which also degrades bradykinin. Therefore it is not expected to potentiate bradykinin-mediated adverse effects or cause oedema.

In humans, an 80 mg dose of telmisartan almost completely inhibits the angiotensin II evoked increase in blood pressure. The inhibitory effect is maintained over 24 hours and still measurable up to 48 hours.

After administration of the first dose of telmisartan, onset of antihypertensive activity occurs gradually within 3 hours. The maximal reduction in blood pressure is generally attained 4-8 weeks after the start of treatment.

With ambulatory blood pressure monitoring and conventional blood pressure measurements, the 24 hour trough to peak ratio for 40-80 mg doses of telmisartan was > 70% for both systolic and diastolic blood pressure.

In patients with hypertension, telmisartan reduces both systolic and diastolic blood pressure without affecting pulse rate. The antihypertensive efficacy of telmisartan is independent of gender or age, and has been compared to antihypertensive drugs including amlodipine, atenolol, enalapril, ramipril, hydrochlorothiazide, lisinopril and valsartan. Telmisartan (40-120 mg once daily) is at least as effective as amlodipine (5-10 mg) and atenolol (50-100 mg once daily). Telmisartan (20-80 mg once daily) is equivalent to enalapril (5-20 mg once daily), and telmisartan (40-160 mg once daily) is comparable to lisinopril (10-40 mg once daily) (see also subsection on **Clinical trials** below).

After the first dose of telmisartan, the incidence of symptomatic orthostatic hypotension with symptoms severe enough to be reported as an adverse event in 3445 patients was 0.4% (14/3445).

Upon abrupt cessation of treatment, blood pressure gradually returns to pre-treatment values over a period of several days without evidence of rebound hypertension.

Clinical trials

Treatment of hypertension

The antihypertensive effects of telmisartan were examined in three pivotal short-term (8-12 weeks) placebo-controlled clinical trials, studying a range of 40-160 mg daily. The studies involved a total of 908 patients with hypertension (diastolic blood pressure of 95-114 mmHg), 483 of whom were randomised to receive telmisartan. One of the studies was a 12-week, fixed-dose study comparing telmisartan (40-160 mg), enalapril 20 mg, and placebo. The other two were dose titration studies; one comparing telmisartan (40 to 80 mg and 80 to 120 mg), atenolol (50 to 100 mg), and placebo over an 8-week period, the other comparing telmisartan (40 to 80 to 120 mg), amlodipine (5 to 10 mg), and placebo over a 12-week period. Once daily doses of 40-160 mg provided statistically and clinically significant decreases in both systolic and diastolic blood pressure.

Last trough readings of mean decreases in placebo-subtracted systolic/diastolic blood pressure in the fixed-dose study were $12.4 \pm 2.2 / 7.5 \pm 1.3$ mmHg (40 mg dose) and $12.6 \pm 2.2 / 7.9 \pm 1.3$ mmHg (80 mg dose). Dose titration regimens attained mean decreases in placebo subtracted systolic/diastolic blood pressure of $9.2 \pm 3.0 / 5.7 \pm 1.5$ mmHg (40 to 80 mg titrated regimen), $13.1 \pm 3.1 / 6.4 \pm 1.5$ mmHg (80 to 120 mg titrated regimen), and $13.2 \pm 2.3 / 7.1 \pm 1.4$ mmHg (40 to 80 to 120 mg optional titration regimen).

In long term open-label dose-titration studies of telmisartan (with optional hydrochlorothiazide add-on and addition of calcium channel blocker or beta-blocker), 1425 patients were analysed after 46-58 weeks treatment for hypertension. Mean reductions from baseline in last trough systolic/diastolic blood pressure ranged from 17.9 to 25.8 / 14.1 to 16.1 mmHg.

By combining all clinical trials involving angiotensin converting enzyme inhibitors, the incidence of cough was significantly less in patients treated with telmisartan than in those treated with angiotensin converting enzyme (ACE) inhibitors. Additionally, the incidence of cough occurring with telmisartan in six placebo-controlled trials was identical to that noted for placebo-treated patients (1.6%).

In a study in 378 patients with stable congestive heart failure (NYHA class II to III), telmisartan (10 to 80 mg) replaced former enalapril treatment. No difference was observed between telmisartan and enalapril with respect to ejection fraction, functional capacity, signs of heart failure or body weight.

Another study of 533 patients found no significant differences after treatment between both the telmisartan and atenolol treatment groups in a subgroup of hypertensive patients (78 of 533 patients) with respect to left atrium and ventricular or aortic diameters, or in left ventricular wall thickness or muscle mass, when compared to baseline results. In a small substudy involving 33 patients (21 on telmisartan, 11 on atenolol) with left ventricular hypertrophy (defined as LVM index ≥ 125 g/m² at baseline) at baseline, telmisartan and atenolol reduced left ventricular mass index to a similar degree (14-19 g/m²) after 4 months of treatment.

In a study in 30 patients receiving telmisartan with or without hydrochlorothiazide, no significant effects were found on renal plasma flow, glomerular filtration rate or creatinine clearance after 8 weeks treatment, when both systolic and diastolic blood pressure were lowered significantly. In another study in 71 patients with moderate renal failure (creatinine clearance 30-80 mL/min), blood pressure was lowered significantly without changes in creatinine clearance or other renal function parameters. In both trials urinary albumin and protein secretion was reduced, while no changes in sodium or potassium elimination were detected. Plasma electrolytes remained unaffected. Treatment with telmisartan showed no uricosuric effect.

No effect on plasma glucose, C-peptide or insulin levels was found after telmisartan administration. There is no evidence that telmisartan adversely affects patients who have stabilised diabetes.

Prevention of cardiovascular morbidity and mortality

The ONTARGET study evaluated prevention of cardiovascular morbidity and mortality in patients with known high risk for its occurrence either due to prior documented disease or the presence of risk factors, such as diabetes with documented end organ damage. The TRANSCEND and PROFESS studies included different populations, ACE-I intolerant patients and those with a recent stroke (< 120 days), respectively; and evaluated prevention of cardiovascular morbidity and mortality and secondary stroke prevention, respectively as the primary endpoint.

ONTARGET (pivotal study)

ONTARGET (**ON**going **T**elmisartan **A**lone and in **C**ombination with **R**amipril **G**lobal **E**ndpoint **T**rial) compared the effects of telmisartan, ramipril and the combination of telmisartan and ramipril on cardiovascular outcomes in 25620 patients aged 55 years or older with a history of coronary artery disease, stroke, transient ischaemic attack, peripheral vascular disease, or diabetes mellitus accompanied by evidence of end-organ damage (e.g. retinopathy, left ventricular hypertrophy, macro- or microalbuminuria), which represents a broad cross-section of patients at high risk of cardiovascular events.

The co-primary objectives of the ONTARGET trial were to determine if (a) the combination of telmisartan 80 mg and ramipril 10 mg is superior to ramipril 10 mg alone and if (b) telmisartan 80 mg is not inferior to ramipril 10 mg alone in reducing the primary composite endpoint of cardiovascular death, non-fatal myocardial infarction, non-fatal stroke, or hospitalisation for congestive heart failure. Hypothesis tests were performed using hazard ratios and time-to-event analyses (Kaplan-Meier).

The principal patient exclusion criteria included: symptomatic heart failure or other specific cardiac diseases, syncopal episodes of unknown aetiology or planned cardiac surgery within 3 months of the start of study, uncontrolled hypertension or haemorrhagic stroke.

Patients were randomised to one of the three following treatment groups: telmisartan 80 mg (n=8542), ramipril 10 mg (n=8576), or the combination of telmisartan 80 mg plus ramipril 10 mg (n=8502), and followed for a mean observation time of 4.5 years. The population studied was 73% male, 74% Caucasian, 14% Asian, and 43% were 65 years of age or older. Hypertension was present in nearly 83% of randomised patients: 69% of patients had a history of hypertension at randomisation and an additional 14% had actual blood pressure readings \geq 140/90 mmHg. At baseline, the total percentage of patients with a medical history of diabetes was 38% and an additional 3% presented with elevated fasting plasma glucose levels. Baseline therapy included acetylsalicylic acid (76%), statins (62%), beta-blockers (57%), calcium channel blockers (34%), nitrates (29%) and diuretics (28%).

Adherence to treatment was better for telmisartan than for ramipril or the combination of telmisartan and ramipril, although the study population had been pre-screened for tolerance to treatment with an ACE-inhibitor. During the study, significantly less telmisartan patients (22.0%) discontinued treatment, compared to ramipril patients (24.4%) and telmisartan/ramipril patients (25.3%). The analysis of adverse events leading to permanent treatment discontinuation and of serious adverse events showed that cough and angioedema were less frequently reported in patients treated with telmisartan than in patients treated with ramipril, whereas hypotension was more frequently reported with telmisartan.

Comparison of telmisartan versus ramipril: The choice of the non-inferiority margin of 1.13 was solely based on the results of the HOPE (**H**eart **O**utcomes **P**revention **E**valuation) study. Telmisartan showed a similar effect to ramipril in reducing the primary composite endpoint of cardiovascular death, non-fatal myocardial infarction, non-fatal stroke, or hospitalisation for congestive heart failure. The incidence of the primary endpoint was similar in the telmisartan (16.7%) and ramipril (16.5%) groups. In the intention-to-treat (ITT) analysis, the hazard ratio for telmisartan versus ramipril was 1.01 (97.5% CI 0.93-1.10, p(non-inferiority)=0.0019). The non-inferiority result was confirmed in the per-protocol (PP) analysis, where the

hazard ratio was 1.02 (97.5% CI 0.93-1.12, p(non-inferiority)=0.0078). Since the upper limit of the 97.5% CI was below the pre-defined non-inferiority margin of 1.13 and the p-value for non-inferiority was below 0.0125 in both the ITT and PP analyses, the trial succeeded in demonstrating the non-inferiority of telmisartan versus ramipril in the prevention of the composite primary endpoint. The non-inferiority conclusion was found to persist following corrections for differences in systolic blood pressure at baseline and over time. There was no difference in the primary endpoint in subgroups based on age, gender, race, baseline concomitant therapies or underlying diseases.

Telmisartan was also found to be similarly effective to ramipril in several pre-specified secondary endpoints, including a composite of cardiovascular death, non-fatal myocardial infarction, and non-fatal stroke, the primary endpoint in the reference study HOPE, which had investigated the effect of ramipril versus placebo. The ITT hazard ratio of telmisartan versus ramipril for this endpoint in ONTARGET was 0.99 (97.5% CI 0.90-1.08, p(non-inferiority) = 0.0004), and confirmed by the PP hazard ratio of 1.00 (97.5% CI 0.91-1.11, p(non-inferiority) = 0.0041).

Comparison of telmisartan plus ramipril combination versus ramipril monotherapy alone: Combining telmisartan with ramipril did not add further benefit over ramipril or telmisartan alone, thus superiority of the combination could not be demonstrated. The incidence of the primary endpoint was 16.3% in the telmisartan plus ramipril combination group, compared to the telmisartan (16.7%) and ramipril (16.5%) groups. In addition, there was a significantly higher incidence of hyperkalaemia, renal failure, hypotension and syncope in the combination group. Therefore the use of a combination of telmisartan and ramipril is not recommended in this population.

TRANSCEND

TRANSCEND (Telmisartan Randomised Assessment Study in ACE intolerant subjects with cardiovascular Disease) randomised a total of 5926 ACE-I intolerant patients with otherwise similar inclusion criteria as ONTARGET to telmisartan 80 mg (n=2954) or placebo (n=2972), both given on top of standard care. The exclusion criteria of TRANSCEND were similar to those of ONTARGET, with the additional exclusion of patients with proteinuria.

The primary objective of the TRANSCEND trial was to determine if telmisartan 80 mg is superior to placebo given on top of standard care in reducing the composite endpoint of cardiovascular death, myocardial infarction, stroke and hospitalisation for congestive heart failure in patients who are intolerant to ACE-inhibitors. Hypothesis test was performed using hazard ratios and time-to-event analyses (Kaplan-Meier).

The mean duration of follow-up was 4 years and 8 months. The population studied was 57% male, 62% Caucasian, 21% Asian, and 60% were 65 years of age or older. Baseline therapy included acetylsalicylic acid (75%), lipid lowering agents (58%), beta-blockers (58%), calcium channel blockers (41%), nitrates (34%) and diuretics (33%). Mean blood pressure at baseline was 140/82 mmHg. During the study, 17.7% of telmisartan patients discontinued treatment, compared to 19.4% of placebo patients.

No statistically significant difference in the incidence of the primary composite endpoint (cardiovascular death, non-fatal myocardial infarction, non-fatal stroke, or hospitalisation for congestive heart failure) was found [15.7% in the telmisartan and 17.0% in the placebo groups; the event rates per 100 patient years were 3.58 and 3.87, respectively, with a hazard ratio of 0.92 (95% CI 0.81-1.05, p=0.22)]. Thus the trial was not able to demonstrate superiority of telmisartan over placebo given on top of standard care. Analysis of the secondary and other endpoints are therefore considered exploratory in nature. For the pre-specified secondary composite endpoint of cardiovascular death, non-fatal myocardial infarction, and non-fatal stroke (the primary endpoint in HOPE), a lower incidence was found in the telmisartan group (13.0%) compared to the placebo group (14.8%); the event rates per 100 patient years were 2.90 and 3.33, respectively.

The observed yearly event rates observed in TRANSCEND were lower than expected, most likely due to improved medical care, including more frequent use of cardioprotective medications (e.g. statins and beta blockers). This caused the study to be underpowered to detect between group differences. Additionally, in more patients in the placebo group, cardioprotective medications (e.g. blood pressure-lowering drugs such as beta blockers and diuretics) were added during the course of the trial than in the telmisartan group, which could have further confounded the detection of a treatment difference.

PROFESS

The PROfESS (**PR**evention Regimen **F**or **E**ffectively avoiding **S**econd **S**trokes) study was a randomised, parallel group, international, double-blind, double-dummy, active and placebo controlled, 2x2 factorial study to compare aspirin plus extended-release dipyridamole with clopidogrel, and simultaneously telmisartan with placebo in the prevention of stroke in patients who had previously experienced an ischaemic stroke, mainly of non-cardioembolic origin. The study specifically enrolled only patients soon after their stroke (< 120 days) and there were no blood pressure related inclusion criteria.

Of the 20332 patients randomised, 10146 received telmisartan 80 mg and 10186 received placebo, both given on a background of standard treatment. The mean blood pressure at baseline was 144.1/83.8 mmHg.

The primary efficacy outcome measure was the time to first recurrent stroke of any type. For the telmisartan versus placebo comparison, hypothesis test of the primary efficacy outcome measure was performed as a test of superiority using hazard ratios and time-to-event analyses (Kaplan-Meier).

The mean duration of follow-up in PROfESS was short (2.5 years) and more patients in the placebo group received concomitant blood-pressure lowering medications, which may have confounded the results. Additionally, the adherence to the telmisartan regimen was much lower than in ONTARGET, due in part to the factorial nature of the trial and patient population studied (early post stroke).

The incidence of the primary endpoint of recurrent stroke were 8.7% for telmisartan and 9.2% for placebo (hazard ratio 0.95; 95% CI 0.86-1.04, p=0.23). Thus the trial was not able to demonstrate superiority of telmisartan over placebo given on top of standard care. Analysis of the secondary, tertiary and other endpoints are therefore considered exploratory in nature. The incidence of the pre-defined secondary composite endpoint of recurrent stroke, myocardial infarction, death due to vascular causes, and new or worsening congestive heart failure were 13.5% for telmisartan and 14.4% for placebo.

5.2 PHARMACOKINETIC PROPERTIES

Absorption

Following oral administration of telmisartan, absorption is rapid (t_{max} ranges from 0.5 to 2 hours) although the amount absorbed varies. Absolute bioavailability of telmisartan was shown to be dose dependent. The mean absolute bioavailability of 40 mg telmisartan was 40%, whereas the mean absolute bioavailability of the 160 mg dose amounted to about 60%.

The maximum plasma concentration (C_{max}) and, to a smaller extent, area under the plasma concentration-time curve (AUC) increase disproportionately with dose. In a Phase II clinical trial, 40, 80 and 120 mg of telmisartan were administered (in capsules) for 28 days to hypertensive subjects. Maximum plasma concentrations at steady state, $C_{max,ss}$, and AUC_{ss} were determined in 37-39 subjects per dose group.

In this trial, the mean C_{max} showed a more-than-proportional increase with dose, increasing 4.4-fold for a two-fold increase in dose from 40 to 80 mg, and increasing 2.4-fold with a 1.5-fold increase in dose from 80 to 120 mg. The mean AUC_{ss} were nearly proportional with increasing dose, increasing 2.3-fold for a two-fold increase in dose from 40 to 80 mg, and increasing 1.5-fold with a 1.5-fold increase in dose from 80 to 120 mg.

There is no evidence of clinically relevant accumulation of telmisartan taken at the recommended dose.

When telmisartan is taken with food, the reduction in the area under the plasma concentration time curve ($AUC_{0-\infty}$) of telmisartan varies from approximately 6% (40 mg dose) to approximately 19% (160 mg dose). The small reduction in AUC should not cause a reduction in the therapeutic efficacy. Therefore, telmisartan may be taken with or without food.

Distribution

Telmisartan is highly bound to plasma protein (> 99.5%), mainly albumin and alpha-1-acid glycoprotein. The mean steady state apparent volume of distribution (V_{dss}) is approximately 6.6 L/kg.

Metabolism

Telmisartan undergoes substantial first-pass metabolism by conjugation to the acylglucuronide. No pharmacological activity has been shown for the conjugate. Telmisartan is not metabolized by the cytochrome P450 system.

Excretion

Telmisartan is characterised by bi-exponential decay pharmacokinetics with a terminal elimination half-life of 18.3 - 23.0 hours.

After oral (and intravenous) administration, telmisartan is nearly exclusively excreted with the faeces, mainly as unchanged compound. Cumulative urinary excretion is <1% of dose. Total plasma clearance (CL_{tot}) is high (approximately 1000 mL/min) when compared with hepatic blood flow (about 1500 mL/min).

Special populations

Elderly patients: The pharmacokinetics of telmisartan does not differ between younger and elderly patients (i.e. patients older than 65 years of age).

Patients with renal impairment: Lower plasma concentrations were observed in patients with renal insufficiency (creatinine clearance 30-80 mL/min) undergoing dialysis, however, this has proved not to be of clinical significance. Telmisartan is highly bound to plasma proteins in renal-insufficient subjects and cannot be removed by dialysis.

Patients with hepatic impairment: Pharmacokinetic studies in patients with hepatic impairment showed an increase in absolute bioavailability up to nearly 100%.

Gender: Plasma concentrations are generally 2-3 times higher in females than in males. In clinical trials, however, no clinically significant increases in blood pressure response or incidences of orthostatic hypotension were found in females. No dosage adjustment is necessary.

Children: There are limited data on the pharmacokinetics of telmisartan in patients less than 18 years of age.

5.3 PRECLINICAL SAFETY DATA

Genotoxicity

Telmisartan was not genotoxic in a battery of tests for gene mutations and clastogenicity.

Carcinogenicity

Two-year studies in mice and rats did not show any increases in tumour incidences when telmisartan was administered in the diet at doses up to 1000 and 100 mg/kg/day, respectively. Plasma AUC values at the

highest dose levels were approximately 60 and 15 times greater, respectively, than those anticipated in humans at the maximum recommended dose.

6. PHARMACEUTICAL PARTICULARS

6.1 LIST OF EXCIPIENTS

NOUMED TELMISARTAN tablets also contain the inactive ingredients: lactose, Ludipress, povidone, meglumine, sodium hydroxide, magnesium stearate.

6.2 INCOMPATIBILITIES

Incompatibilities were either not assessed or not identified as part of the registration of this medicine. Refer to **section 4.5 Interactions with other medicines and other forms of interactions**.

6.3 SHELF LIFE

In Australia, information on the shelf life can be found on the public summary of the Australian Register of Therapeutic Goods (ARTG). The expiry date can be found on the packaging.

6.4 SPECIAL PRECAUTIONS FOR STORAGE

Store below 30°C. Protect from moisture.

NOUMED TELMISARTAN tablets should not be removed from their foil pack until required for administration.

6.5 NATURE AND CONTENTS OF CONTAINER

NOUMED TELMISARTAN tablets are packed in Al/Al blisters in cartons each containing 7*, 28, 56* or 98* tablets.

** Not currently marketed in Australia.*

6.6 SPECIAL PRECAUTIONS FOR DISPOSAL

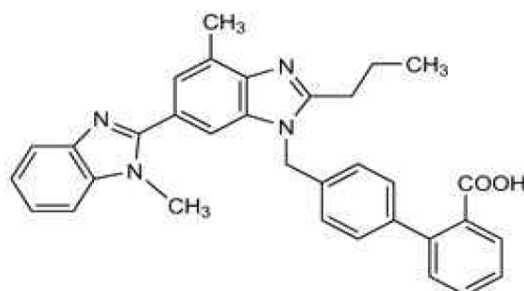
In Australia, any unused medicine or waste material should be disposed of in accordance with local requirements.

6.7 PHYSICOCHEMICAL PROPERTIES

Telmisartan is a white or slightly yellowish, crystalline powder. It is practically insoluble in water, very slightly soluble in ethanol, slightly soluble in methanol and soluble in a mixture of chloroform and methanol (1:1). It dissolves in 1 M sodium hydroxide.

Chemical Name: 4'-[[4-Methyl-6-(1-methyl-1H-benzimidazol-2-yl)-2-propyl-1H-benzimidazol-1-yl]methyl]biphenyl-2-carboxylic acid.

Chemical structure:



Empirical formula: C₃₃H₃₀N₄O₂

Molecular Weight: 514.6

CAS Number: 144701-48-4

7. MEDICINE SCHEDULE (POISONS STANDARD)

S4 – Prescription Only Medicine

8. SPONSOR

Avallon Pharmaceuticals Pty Ltd

Level 5, 7 Eden Park Drive

Macquarie Park NSW 2113

Tel: 1800 930 999

www.avallon-pharma.com.au

9. DATE OF FIRST APPROVAL

28 February 2018

10. DATE OF REVISION

21 September 2021

Summary table of changes

Section changed	Summary of new information
2, 3, 6.1, 6.5	Added statement on excipient with known effect (lactose). Editorial changes to move information to appropriate sections.
4.5	Revised information on hyperkalaemia; concomitant use with NSAIDs, other antihypertensives. Added information on use with potassium-sparing diuretic/potassium supplements, diuretics (thiazide or loop), corticosteroids, other medications
8	Revised sponsor details; added contact information.